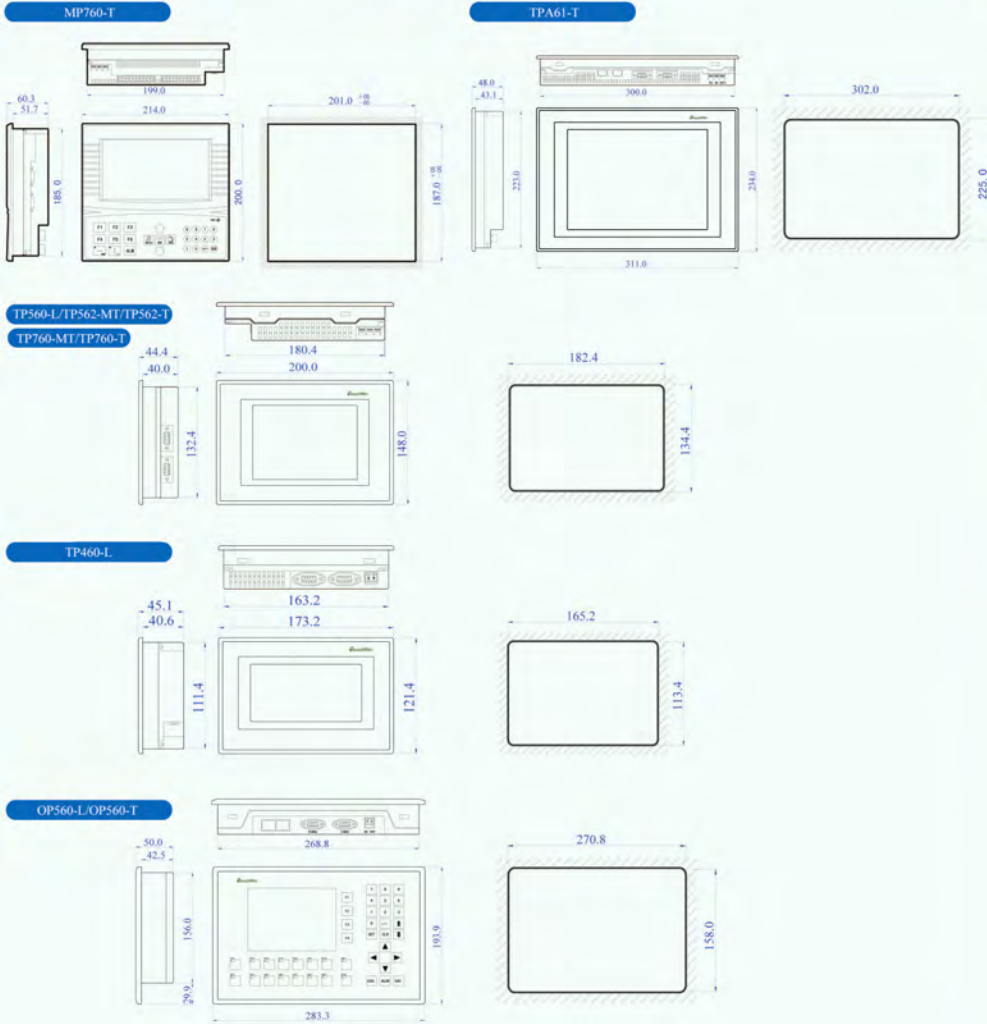


# Appearance & Dimensions



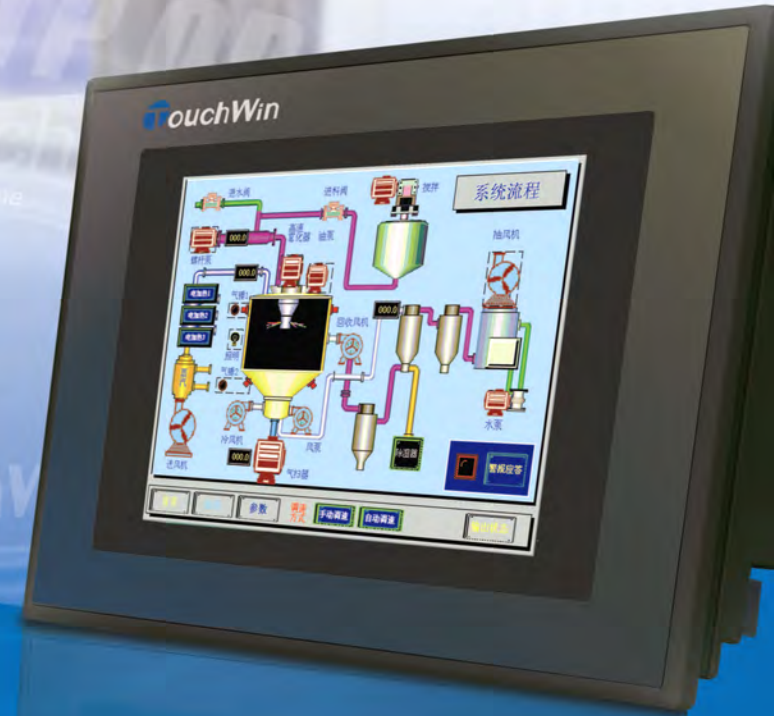
**THINGET**  
Xinje Electronic Co., Ltd.

4th Floor Building 7, Originality Industry  
Park, 100 Dicui Road, Wuxi City, Jiangsu  
Province 214072  
Tel: 0510-85134136 85123803  
Fax: 0510-85111290  
http://www.thinget.com  
E-mail: xinje@pub.wx.jsinfo.net

Distributor

**TouchWin**  
Human Machine Interface

**THINGET**



**TP·OP·MP** Series  
HMI with Simple Operation And  
Full Function



TPA61-T

## > TPA61-T



## > TP760-MT



TP760-MT

## > TP760-T



TP760-T



## > TP562-MT



TP562-MT

## > TP562-T



TP562-T  
(The color of Dos Shell could be optional,white and black.)



## > TP560-L



TP560-L  
(The color of Dos Shell could be optional,white and black.)

## > TP460-L



TP460-L



## > OP560-T



OP560-T  
(The color of Dos shell could be optional,black and white.)



> OP560-L

- 5.7"
- Black and White
- Blue screen
- 320X240 pixel
- 4MB FlashROM
- 2KB SRAM
- 42 function keys

The color of OP560-L is optional, white and dark blue.

> MP/OP 330

- 3.7"
- Yellow-green LCD
- 192X64 pixel
- 64KB FlashROM
- 1KB SRAM
- 26 function keys



MP/OP330 MP 330 support touch

> OP320-A



- 3.7"
- Yellow-green LCD
- 192X64 pixel
- 64KB FlashROM
- 1KB SRAM
- 20 function keys

OP320-A

> OP320

- 3.7"
- Yellow-green LCD
- 192X64 pixel
- 64KB FlashROM
- 1KB SRAM
- 7 function keys



OP320

> Basic functions

- Rich sizes: 3.7", 4.7", 5.7", 7", 10.4"
- Display: Yellow-green STN, monochrome LCD, 65536 true color, 256 true color
- Fast response, flexible key-press
- Digital touch style
- OP key-press: 42, 20, 7, the numeric keys can be defined as function
- Memory space: Maximum 8M FlashROM, Maximum 4K SRAM
- OP: communication/download port
- TP: communication port, download/communication port
- Support: RS-232, 485, 422
- Built-in RTC(Real Time Clock)



> Communication Ability



- Can communicate with PLC of different brands and a variety of models directly, such as Mitsubishi, Siemens, Omron, Schneider and so on.
- Can communicate with Xinje inverters directly.
- Can drive the panel printers directly, economic and flexible.
- Support free protocol, terminal users can write drive programs freely. Users can write the drive programs according to the device's communication protocol. With the edited drive program, user can realize the communication between TP series HMI and any device easily.
- TP series touch panels have two separate COM ports, can connect with 2 different devices at the same time. Eg: COM1 connects with PLC, COM2 connects with inverter.
- Support Chinese panel in PinYin, complete the recipe function.
- With optimized protocol, sample the data rapidly.

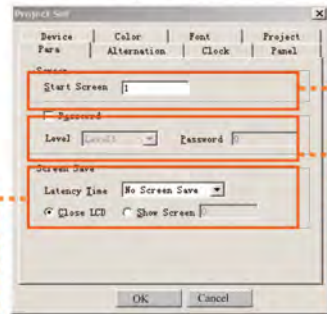
> TP in the network

- One TP with many PLC
- Many TP with many PLC

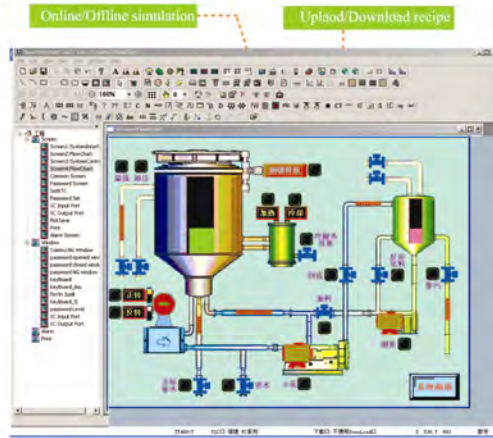


## ★ Touchwin Edit Tool

TouchWin Screen Edit Tool is designed specially for TP series touch panels. The Tool provides rich resources and a convenient platform for the users. Advanced functions enable the users edit the screens as will (refer to P7) .



★ Screen protect function



★ Setting the display picture boot-strap

★ 10-level security functions  
★ The screen display password protection according to the operator level.

## Rich text performance capabilities

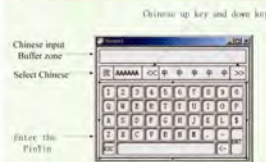
- ★ Windows graphical font input
- ★ Support simplified/traditional Chinese, English Japanese and other countries.
- ★ Support any font, any size, bold, italic, underline, etc.
- ★ Support art words, projection, filling, etc



## Alarm List



Build-in Chinese characters keyboard, directly input Chinese



## Rich library resources & Components

- ★ Graphics: real-time/historical trends, indication lamp, buttons, real-time/historical display.
- ★ Equipment: meter, valves, pipes, fans, pumps, motors, reaction tanks, etc.
- ★ Dynamic map, BMP plans
- ★ Bar map, Column map
- ★ Date, real-time clock, buzzer, backlight



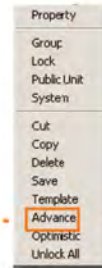
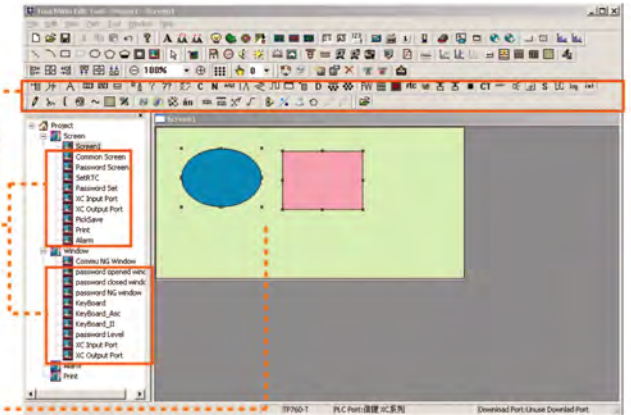
▶ The advanced instructions, which is main for advanced users, is included in TP Edit Tool. It equals the second development based on the current functions. With these advanced functions, the system is much stronger and more suitable for users.

With a sample setting in system files, enter the advanced mode easily.

Compare with the normal mode, the toolbar changes; with added logical operation, command, etc.

The project column generates several windows automatically.

When more than two components are chosen, right-click the mouse, the following dialog box will pop up.



Operation in advanced mode

- ★ Systematism
- ★ Creat the temple
- ★ Advanced

Link individual property of different components

Extract component property for a separate control.



# Simulation functions

## Online simulation

- No need to download the project into Touch Panel. Directly connect PLC with computer, then you can get the PLC data from TouchWin edit tool, and simulate corresponding actions.



## Offline simulation

- No need to download the project into Touch Panel, no need to connect PLC with computer, the user can simulate a series of actions directly in TouchWin edit tools, judge and correct the errors according to this.



## Monitor Software

- The operation can realize the function similar to SCADA. Users, who have completed the programming, can enter into SCADA mode to simulate operations.

### 1. Select PC monitoring software

Select "new" in the "file" menu, the following window will pop-up.

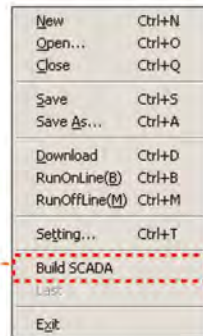


### 2. Build SCADA

In the "file" menu, select "Build SCADA"

### 3. Simulate configuration

Users, who have completed the screen, can enter into the previous SCADA files to simulate operations.



# Common PLC connection Cables

PLC type	Series	CPU	Model
Xinje	XC series	XC1	OP-FC-CAB0
		XC3	
XC5			
XCM			
	FC series		
Mitsubishi	MELSEC	FX0	OP-FC1-CAB0
		FX0n-60MR	
		FX1	
		FX1S	
		FX1N	
		FX2C	
		FX2N	
		FX2N-64MR FX2NC-32MT	
Siemens	SIMATIC S7-200	CPU212	OP-S7-CAB0
		CPU221	
		CPU222	
		CPU224	
		CPU226	
OMRON	SYSMAC	CJ	OP-CQMCAB0
		CS	
		CPM1A/2A	
		C1000HF	
		C2000	
		CQM1-CPU11	
		CQM1-CPU42	
Matsushita Electric	NAIS	CPIH	OP-FP-CAB0
		FP2/3	
		FP5	
		FP10(S)	
		FP1	
		FP-M	
		FP10SH FP0	
Koyo	KOSTAC-SG	SG-8	OP-SU-CAB0
		SU-6B	
	KOSTAC-SU	SU-6/5	OP-SZ-CAB0
	KOSTAC-SZ	SZ-4	
	KOSTAC-SR	SR-21/22	
Keyence	KZ-300	KZ300/350	OP-KEN-CAB0
		KV	
		KV-10/16/24/40 KV-700	
Delta	DVP series		OP-DVP-CAB0
AB	Logic1000		OP-AB-CAB0
Yonghong	FB series		OP-FB-CAB0
LG	Master-K	K80/120	OP-LG-CAB0
Schneider	Micro		OP-Twido-CAB0
	NEZA		
	Twido		

# TP Series Specifications

# MP&OP Series Specifications

Model	TPA61-T	TP760-T	TP760-MT	TP562-MT	TP562-T	TP560-L	TP460-L
<b>Screen Property</b>							
Type	TFT true color LCD		65536 TF True color LCD		TFT true color LCD		CCFL monochrome monochrome
Using life	Above 50000 hours, ambient temperature 25°C, 24-hour running						
Display area	640×480	480×234		320×234		320×240	240×128
Contrast	Not adjustable				Adjust by the potentiometer		
Text setting	English, Simplified and Traditional Chinese, Japanese and so on						
Character size	Any size, any font						
Touch panel	Matrix type, resistor type touch						
<b>Memory</b>							
Screen	8MB	4MB			2MB		
Data	4KB				2KB		1KB
<b>Interfaces</b>							
Download port	RS-232						
Communication port	RS-232/RS-485/RS-422						
<b>Electric Features</b>							
Input voltage	DC24V						
Voltage range	DC22V~26V						
Current consumption	380mA	150mA	180mA		240mA	200mA	
Momentary power-off	Bellow 10mS (less than 1S in fact)						
Anti-voltage impulse	AC1000V, 20mA less than 1 Min						
Insulative resistance	Above 10M, DC 500V						
<b>Environment</b>							
Operating temperature	0°C~50°C						
Storage temperature	-20°C~60°C						
Operating humidity	10%RH~90%RH (No Dew)						
Anti-interfere capability	Interfere voltage: 1500Vp-p Cycle of pulse: 1ms Duration time: 1 Min						
Atmosphere	Non-corrosive gasses						
<b>Structure</b>							
Cooling method	Natural cooling						
External dimension	311×234×48	200.0×148.0×44.4				173.2×121.4×45.1	
Mounting dimension	302×225	182.4×134.4				165.2×113.4	

Model	MP760-T	OP560-T	OP560-L	MP330	OP330	OP320-A	OP320
<b>Display</b>							
Type	TFT true color LCD		CCFL monochrome	Yellow-green LCD			
Using life	Above 20000 hours, ambient temperature 25°C, 24-hour running						
Display area	480×234	320×234	320×240	192×64			
Contrast	Not adjustable		Adjust by the potentiometer				
Text setting	English, simplified and traditional Chinese, Japanese			simplified and traditional Chinese, English			
Character size	Any size Any font			Chinese: 16×16 32×32 English: 8×16 16×32			
Key press	26	42		26	20	7	
<b>Memory</b>							
Screen	4MB			64KB FlashROM			
Data	4KB	2KB		1KB SRAM			
<b>Interfaces</b>							
Download port	RS-232						
Communication port	RS-232/422/485			Normally support RS-232/422, and (-s) item support RS-232/485			
<b>Electric Features</b>							
Input voltage	DC24V						
Voltage range	DC22V~26V						
Current consumption	<260mA			<140mA			
Momentary power-off	Bellow 10S (less than 1s in fact)						
Anti-voltage impulse	AC1000V, 20mS less than 1 Min						
Insulative resistance	Above 10M, DC500V						
<b>Environment</b>							
Operating temperature	0°C~50°C						
Storage temperature	-20°C~60°C						
Operating humidity	10%RH~90%RH (No Dew)						
Anti-interfere capability	Interfere voltage: 1500Vp-p Cycle of pulse: 1mS Duration time: 1Min						
Atmosphere	Non-corrosive gasses						
<b>Structure</b>							
Cooling method	Natural cooling						
External dimension	214×200×60.3	283.3×193.9×50		172×121×56.5	172×94×30	163.5×101.7×38	
Mounting dimension	201×187	270.8×158		164×113	163×85	154×94	

