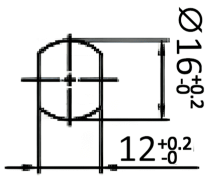
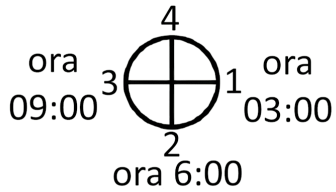




## Comutator Rotativ SANTON 4 Pozii 25 A

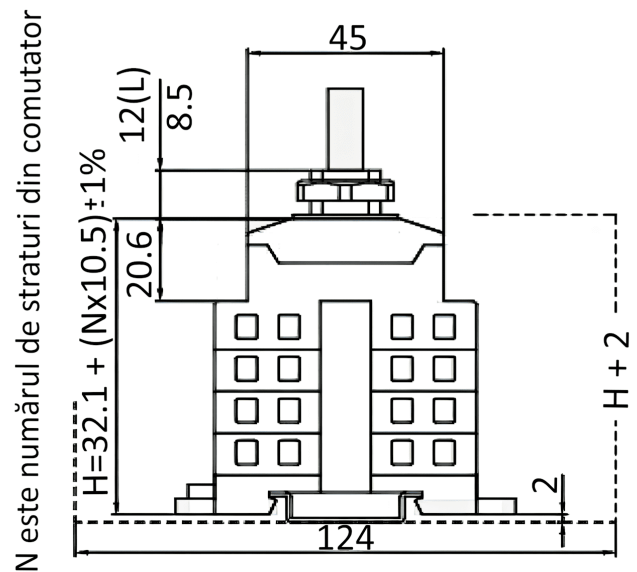
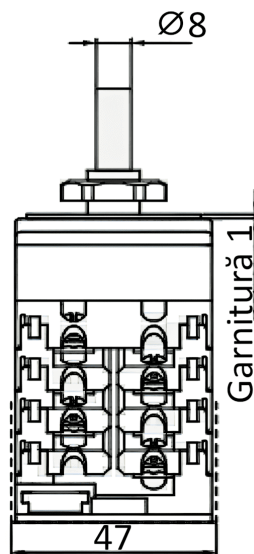
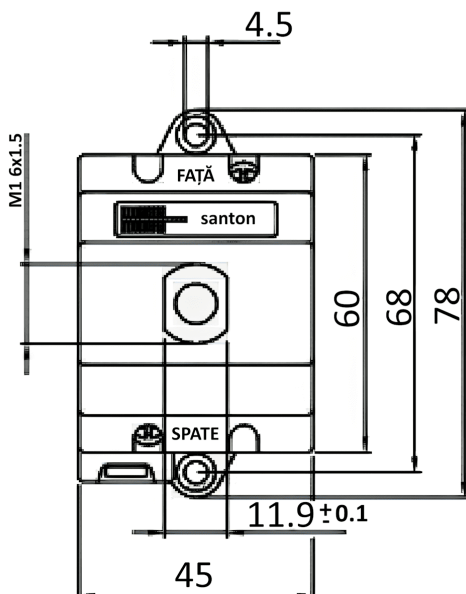
Comutator cu 4 poziții, rotirea în ambele sensuri care permite prinderea în tablou prin înfiletare, terminale cu șurub și cleme, cu sarcina de curent de 25A & tensiunea maximă de 1000V DC.

ora 12:00



DECUPARE PANOU

Technical data	Symbol	Merit	Unit
rated operational voltage (DC poles)	Ue		1000 V dc
rated operational current (DC poles)	Ie		16 A dc
rated operational voltage (second rating DC poles, if requested)	Ue		850 V dc
rated operational current (second rating DC poles, if requested)	Ie		20 A dc
rated operational voltage (third rating DC poles, if requested)	Ue		800 V dc
rated operational current (third rating DC poles, if requested)	Ie		25 A dc
rated operational voltage (fourth rating DC poles, if requested)	Ue		650 V dc
rated operational current (fourth rating DC poles, if requested)	Ie		32 A dc
method of mounting	both bottom and single hole mounting [D]		
number of DC poles	4		
utilization category DC	DC-21B		
actuator	motor driven switch with black knob [Q3A]		
positions	OFF at 3 hr, ON at 6 hr, OFF at 9 hr, ON at 12 hr		
rated impulse withstand voltage	Uimp		8 kV
insulation voltage	Ui		1000 V
rated thermal current uninterrupted duty	Iu		25 A
rated short-time withstand current (1s)	Icw		750 A
rated short-circuit making capacity	Icm		1,4 kA
rated conditional short-circuit current			5 kA
method of operation	independent manual operation		
minimum required dimensions of enclosures L x W x H* (on DIN-rail H = +2mm) {space envelope}			124 x 47 x 105,6 mm
* see the drawing for the height of the switch. The number of layers N is:	7		
knob operation force		max.	1,4 Nm
tightening torque terminal screws M4, min. - max.	1,5	1,7	Nm
tightening torque panel mounting nut, min. - max.	2,0	2,5	Nm
tightening torque M3 screw in the standard black knob, min. - max.	0,5	0,7	Nm
ambient temperature allowed between	- 25 to + 70 °C		
storage temperature allowed between	- 40 to + 80 °C		
maximum relative humidity, without condensation at 20 °C	90 %		
pollution degree	2		
IP rating terminals	IP20		
IP rating gland of the shaft in case of single hole panel mounting	IP65		
rated operational voltage (AC poles)	Ue		V ac
rated operational current (AC poles)	Ie		A ac
number of AC poles (for general use)			
minimum required fine wire cross-section: IEC60947-1, table 9	mm <sup>2</sup>		
auxiliary contact(s), AC15	Both normally open and closed in one chamber, 250V, 16A: [R]		
auxiliary contact ratings			
weight			315 g
accessories:	-		



N este numărul de straturi din comutator



0726.175.111 | COMPONENTE PNEUMATICE ȘI HIDRAULICE  
0721.228.444 | COMPONENTE ELECTRICE  
0754.075.656 | COMPONENTE MECANICE



AUTOMATIC INVEST  
ROMANIA, IAȘI,  
CALEA CHIȘINĂULUI, NR. 29



WWW.AUTOMATIC.RO  
EMAIL  
VANZARI@AUTOMATIC.RO