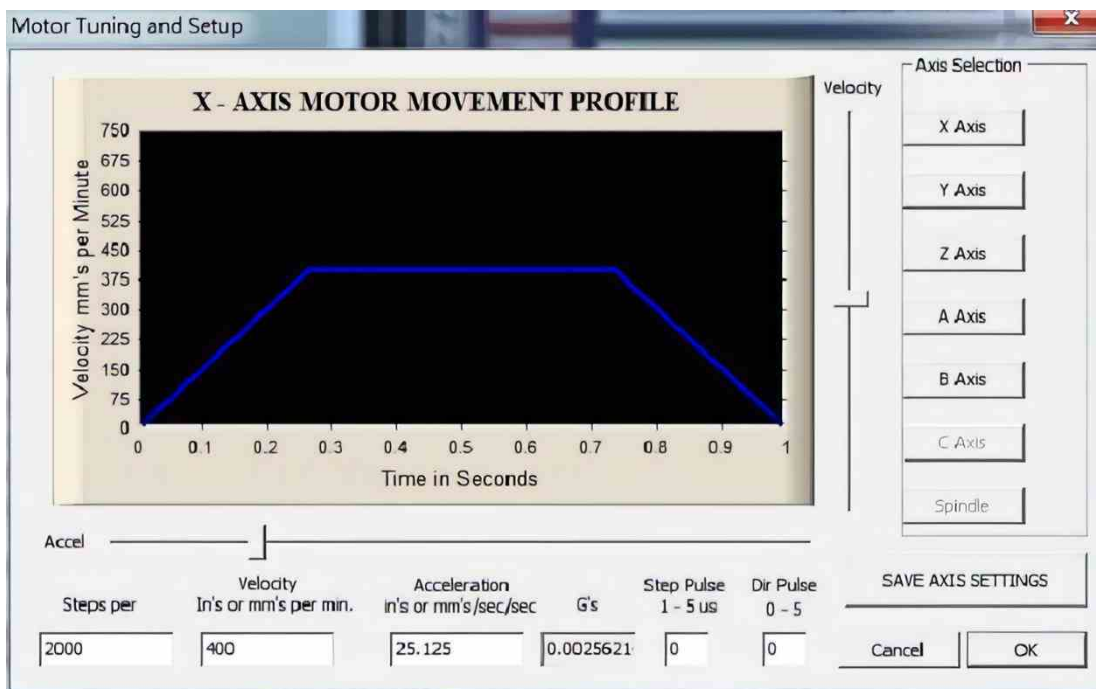




Controller Cu Schimbare Automata De Scule 8T



Control system for CNC Router



0726.175.111 | COMPONENTE PNEUMATICE ŞI HIDRAULICE
0721.228.444 | COMPONENTE ELECTRICE
0754.075.656 | COMPONENTE MECANICE



AUTOMATIC INVEST
ROMANIA, IAŞI,
CALEA CHIŞINĂULUI, NR. 29



WWW.AUTOMATIC.RO
EMAIL
VANZARI@AUTOMATIC.RO

Controller system included: 1. Connect with computer: Mach3, Ncstudio 53C, etc. 2. Offline: DSP handle, Ncstudio NK200, Syntec, etc.



工作指示灯状态说明:
快闪: 表示工作正常
慢闪: 表示控制卡工作正常,
驱动安装不正常
不亮: 表示控制卡坏了

PEI: 请将PE和变频器的
Pe连接在一起, 增
加抗干扰。

16个输入信号接口

主轴变频器接口

USB接口

工作指示灯 外接电源指示灯

输出0V
输出24V
X轴原点信号 (输入0)
Y轴原点信号 (输入1)
Z轴原点信号 (输入2)
A轴原点信号 (输入3)
对刀信号输入 (输入4)
输入5
输入6
输入7
输入8
输入9
输入10
输入11
输入12
输入13
输入14
输入15
5V PWM信号输出
主轴开层输出
10V输入
变频器调速输出: 0-10V
变频器信号地

源输入: 24V
原输入: 地线

输出: 24V
输出: 0V

输出7
输出6
输出5
输出4
输出3
输出2
输出1
输出0

方向-脉冲-输出: 5V
方向-脉冲-输出: 5V
方向-脉冲-输出: 5V
方向-脉冲-输出: 5V

Power in: DC-24V, DC-0V

OutPut Control Port: 24V, 0V, OUT7, OUT6, OUT5, OUT4, OUT3, OUT2, OUT1, OUT0

X-axis: XD, XP, 5V

Y-axis: YD, YP, 5V

Z-axis: ZD, ZP, 5V

A-axis: AD, AP, 5V

B-axis: BD, BP, 5V

C-axis: CD, CP, 5V

InPut Control Port: 0V, 24V, X-HOME, Y-HOME, Z-HOME, A-HOME, PROBE, ESTOP, In-6, In-7, In-8, In-9, In-10, In-11, In-12, In-13, In-14, In-15

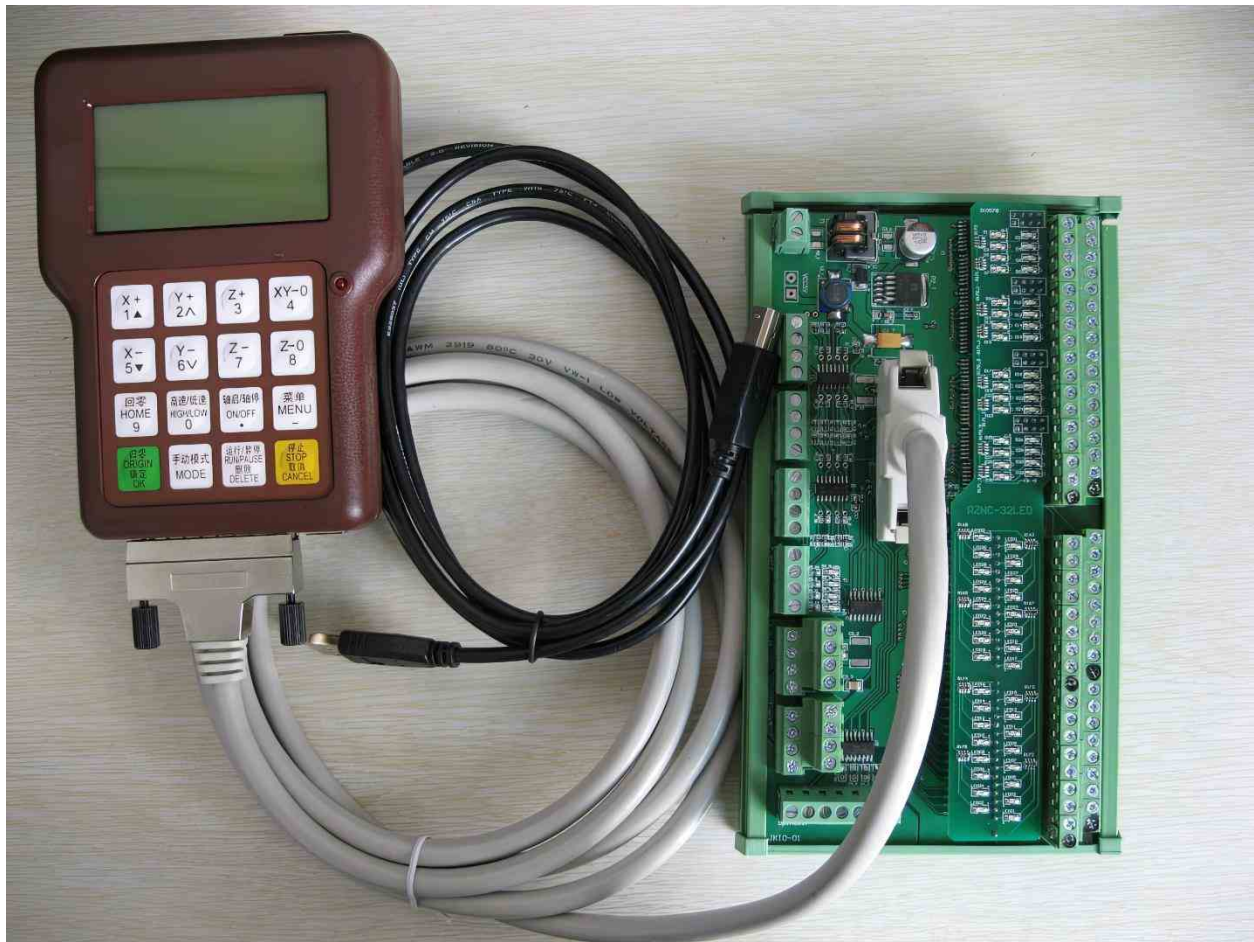
Spindle: PWM, FWD, 10V, VI, COM

0726.175.111 | COMPONENTE PNEUMATICE ŞI HIDRAULICE
0721.228.444 | COMPONENTE ELECTRICE
0754.075.656 | COMPONENTE MECANICE

AUTOMATIC INVEST
ROMANIA, IAŞI,
CALEA CHIŞINĂULUI, NR. 29

WWW.AUTOMATIC.RO
EMAIL
VANZARI@AUTOMATIC.RO

Mach3 Control system: 1. USB Interface, connect with computer, compatible with Windows10 64bits. 2. Computer controlled. 3.Supported for tools changing, pneumatic tool changing. 4.The machine was influenced by the computer. 5. Necessary parts supported: Wireless hand wheel, Wireless knife check instrument.



DSP Control system: 1.Standard for 3 axis control mode, also supported for 4th axis controlling. 2. Supported for G code / PLT format. 3. Supported for CAM software: Type3 / Artcam / UG / ProE / MasterCAM / Cimatron.....etc. 3. Owing power-fail protection function. 4. Supported for break-point memory. 5. Multi-coordinate memory function. 6.Supported for adjusting spindle speed. 7. Supported for adjusting working-speed. 8.Simple manual operation mode. 9. Internal storage: 512M. 10.USB Interface. 11. Offline controlled the machine, not influenced by computer.



0726.175.111
0721.228.444
0754.075.656

COMPONENTE PNEUMATICE ŞI HIDRAULICE
COMPONENTE ELECTRICE
COMPONENTE MECANICE



AUTOMATIC INVEST
ROMANIA, IAŞI,
CALEA CHIŞINĂULUI, NR. 29



WWW.AUTOMATIC.RO
EMAIL
VANZARI@AUTOMATIC.RO